

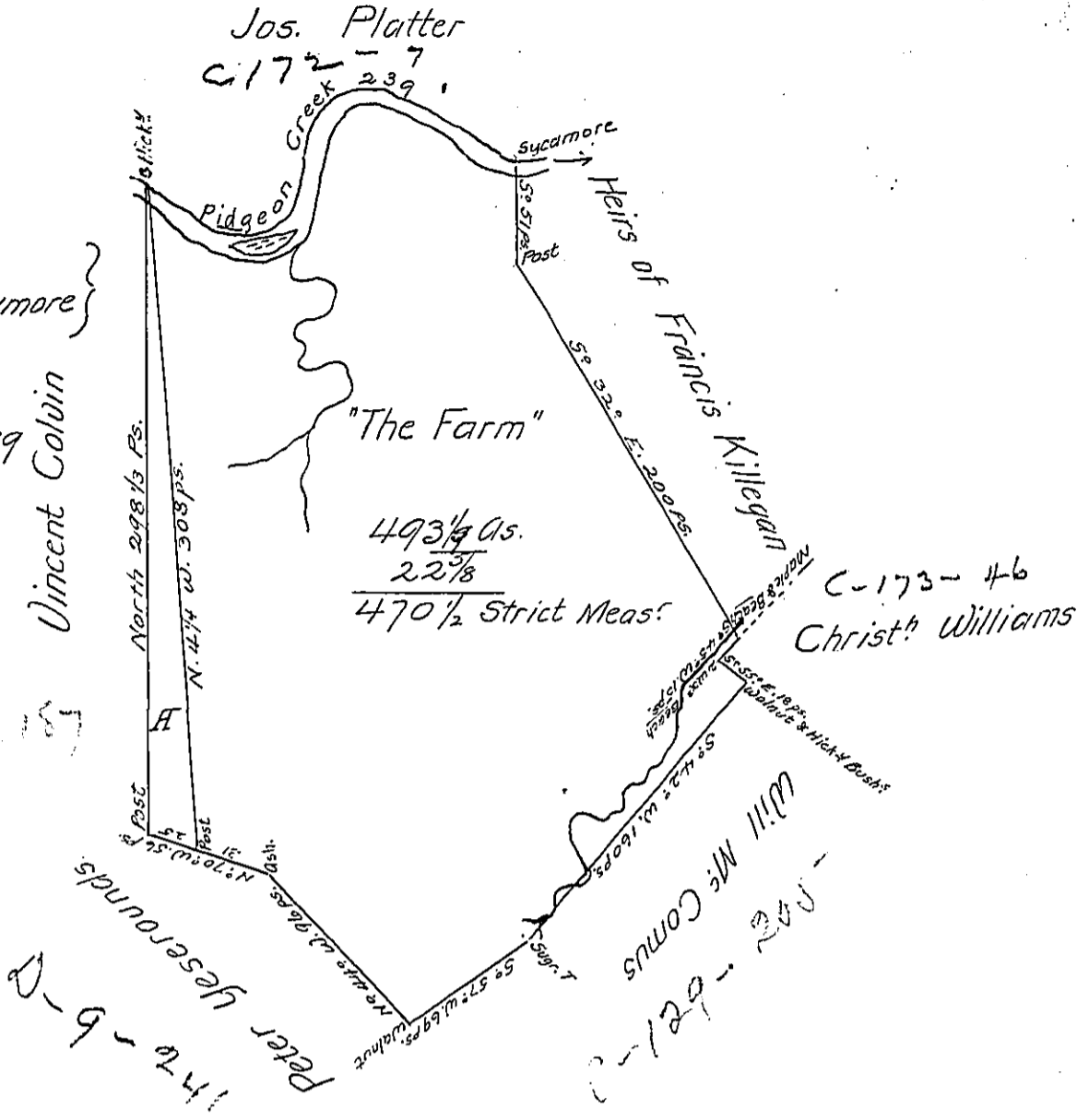
Courses down ye Ck
from ye Hicky. to Sycamore

- S^o 51^o E. 48 ps.
- N^o 68^o E. 40 Do.
- N^o 15^o E. 61 Do.
- S^o 69^o E. 90 Do.

239

Vincent Colvin

Note the Triang^r piece A ordered to
be cut off this Dft. & added to
U. Colvins adj^d Tract & the sd
Colvins two Virg^a Certifts. to be
appropriated to this Tract.
See Order of Bd. Py. of 3d. Mar. 1788.



A Draught of a Survey called "The Farm" situate on
Pidgeon Ck. in Washington County, contg. ^{470 1/2}~~493 1/4~~ as. strict measure executed
June ye 5th. 1787 in Consequence of a Certift. for 400 acs. granted to Vincent
Colvin by the Commiss^{rs} appointed by Virga. to adjust the Claims to unpat-
ented— in the Counties Mononga. Yohga. & Ohio & duly entered &c. his two
Ent^s of 400a & 200a. of 28th. Mar. 1780 appropriated to this.

Presley Nevill }
Mattw. Ritchie } Df

Retd. 13th. Mar. 88.

Jno. Lukens Esqr. S. Genl.

IN TESTIMONY that the above is a copy of the original remaining on file in
the Department of Internal Affairs of Pennsylvania, made
conformably to an Act of Assembly approved the 16th day of
February, 1833, I have hereunto set my Hand and caused
the Seal of said Department to be affixed at Harrisburg,
this nineteenth day of April 1904.

James P. Benson
Secretary of Internal Affairs.